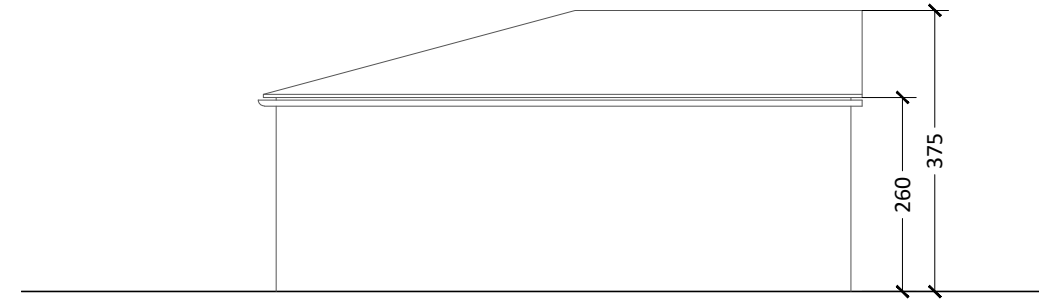
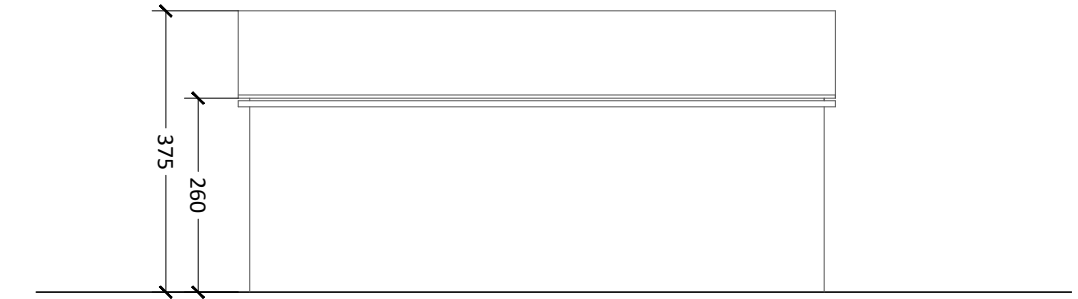


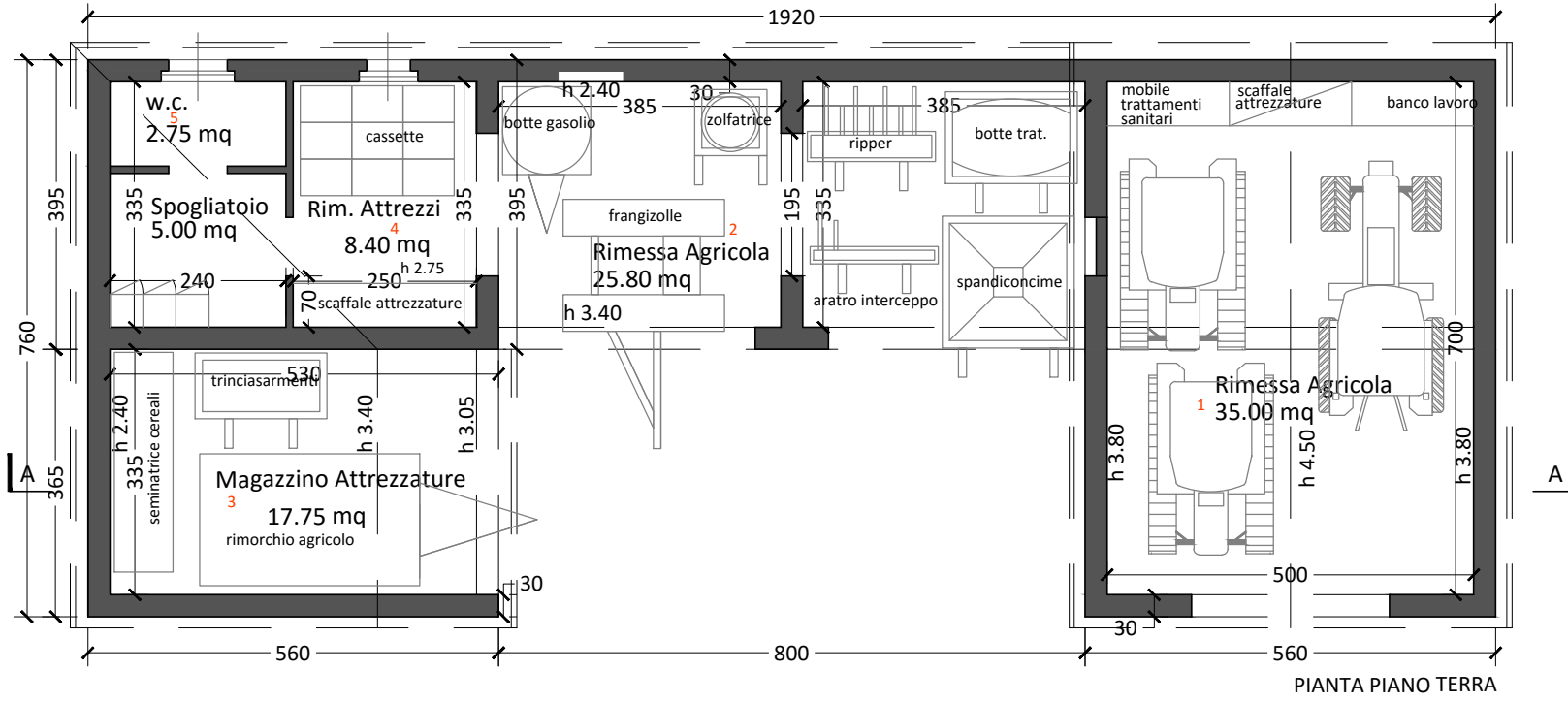
PROSPETTO NORD



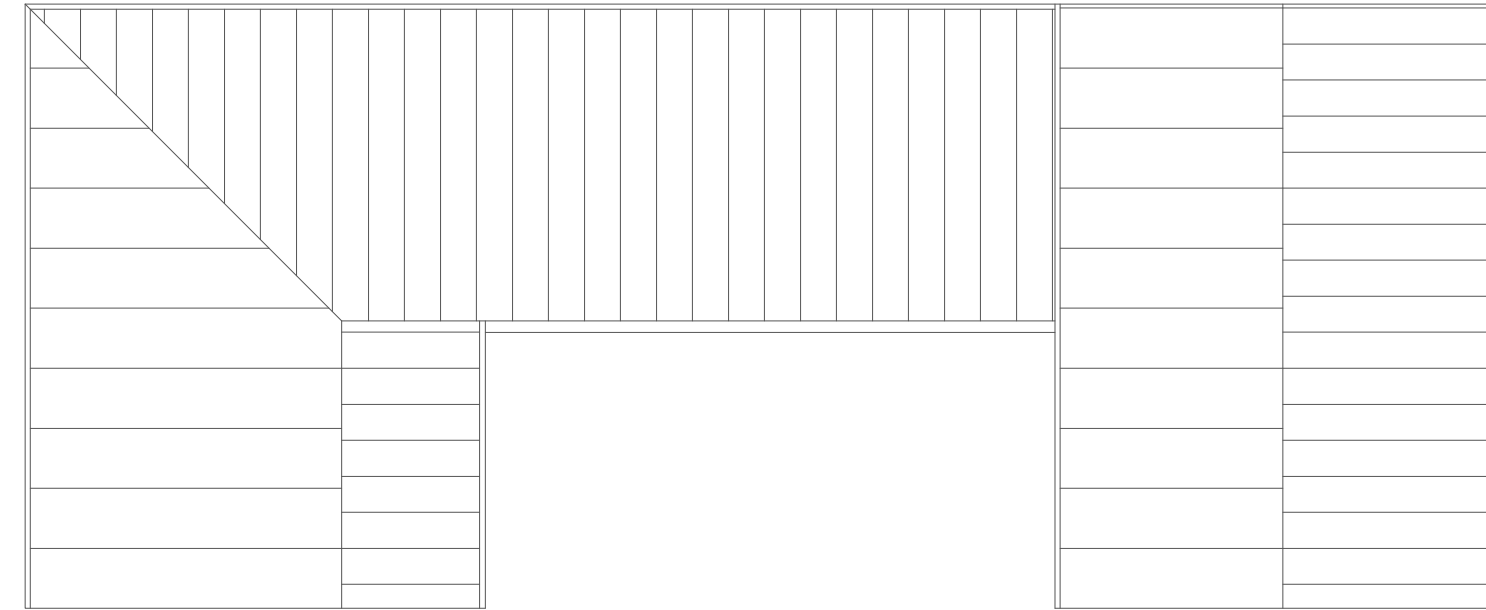
PROSPETTO OVEST



PROSPETTO EST



PIANTA PIANO TERRA



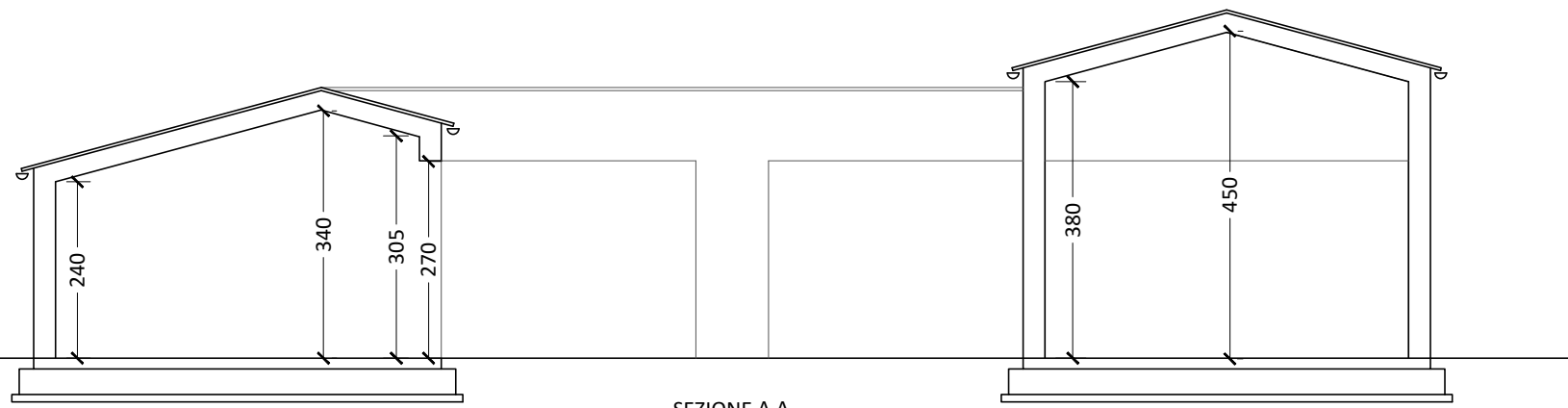
PIANTA DELLE COPERTURE

COMPUTO DEI VOLUMI

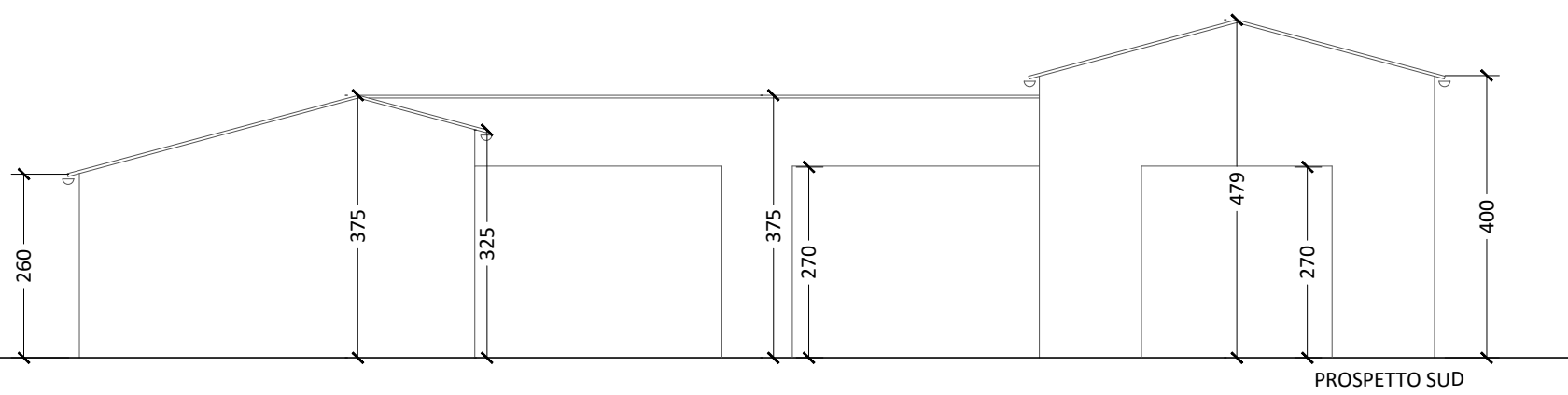
TABELLA DELLE SUPERFICI UTILI		TABELLA DELLE SUPERFICI LORDE	
1 rimessa	35,00 mq	1 5,60 x 7,60 =	42,56 mq
2 rimessa	25,80 mq	2 8,00 x 3,95 =	31,60 mq
3 rimessa	17,75 mq	3 3,65 x 5,60 =	20,44 mq
4 rimessa	8,40 mq	4 2,80 x 3,95 =	11,06 mq
5 wc	7,75 mq	5 2,80 x 3,95 =	11,06 mq
<b>Totale</b>	<b>94,70 mq</b>	<b>Totale</b>	<b>116,72 mq</b>

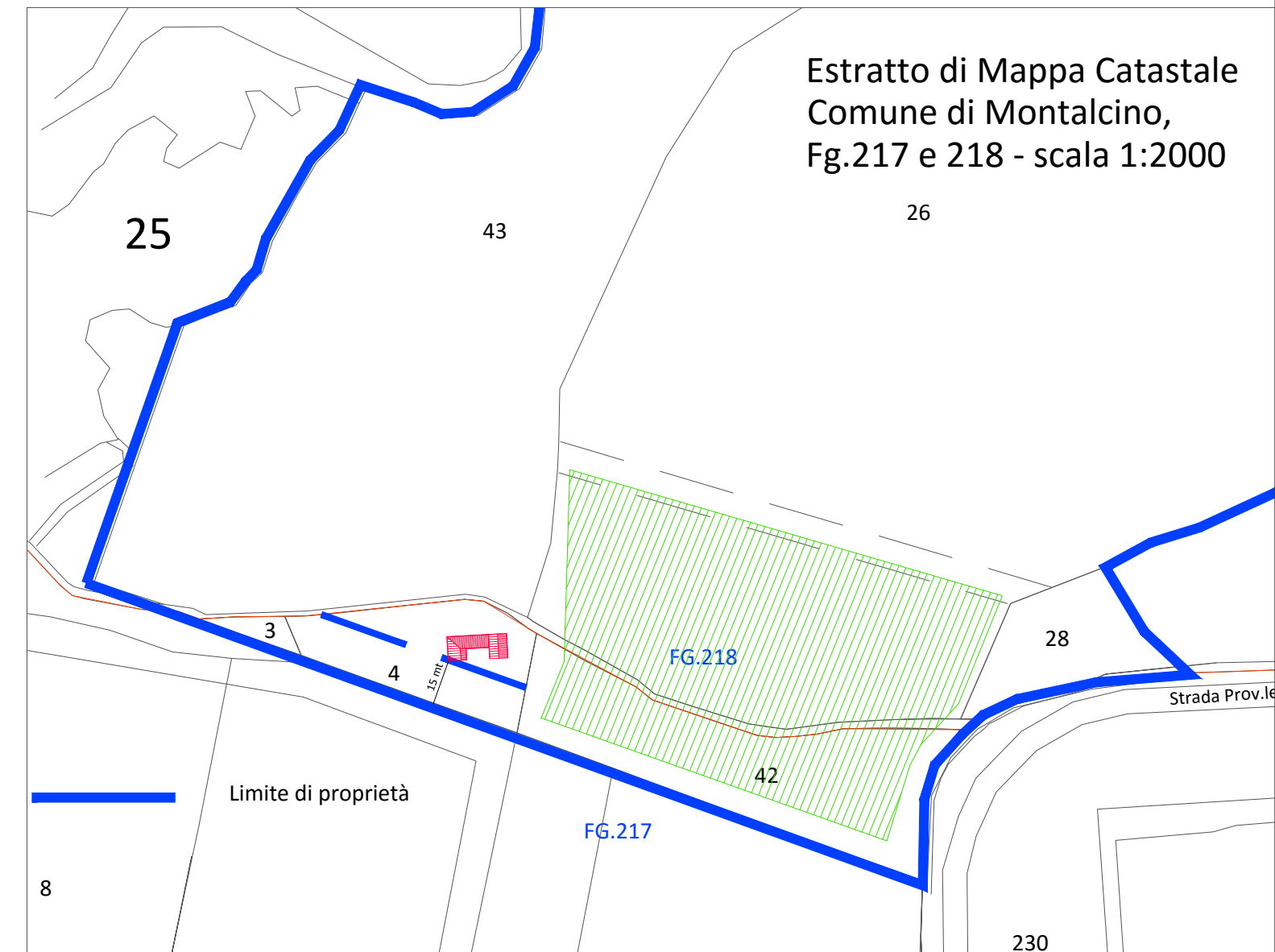
TABELLA DEI VOLUMI	
1	42,56 mq x 4,15 hm = 176,62 mc
2	31,60 mq x 2,90 hm = 91,64 mc
3	20,44 mq x 2,95 hm = 60,30 mc
4-5	22,12 mq x 2,95 hm = 65,25 mc
<b>Totale</b>	<b>393,21 mc</b>



SEZIONE A A



PROSPETTO SUD



studio Pignattai Rabagli associati

Montalcino  
Via Mazzini 46  
tel. fax 0577 1740046

Cliente Azienda Agricola PODERE GIARDINO di Dragoni Federico

Data 27.06.2016

DWG

Lavoro P.a.p.m.a.a. ai sensi della L.r. 65/2014  
Loc. Pod. Giardino S. Angelo in Colle

Agg.

Tavola N°

Oggetto Volumetria in Programma  
Sviluppo della Rimessa Agricola

Scala 1:100

08b