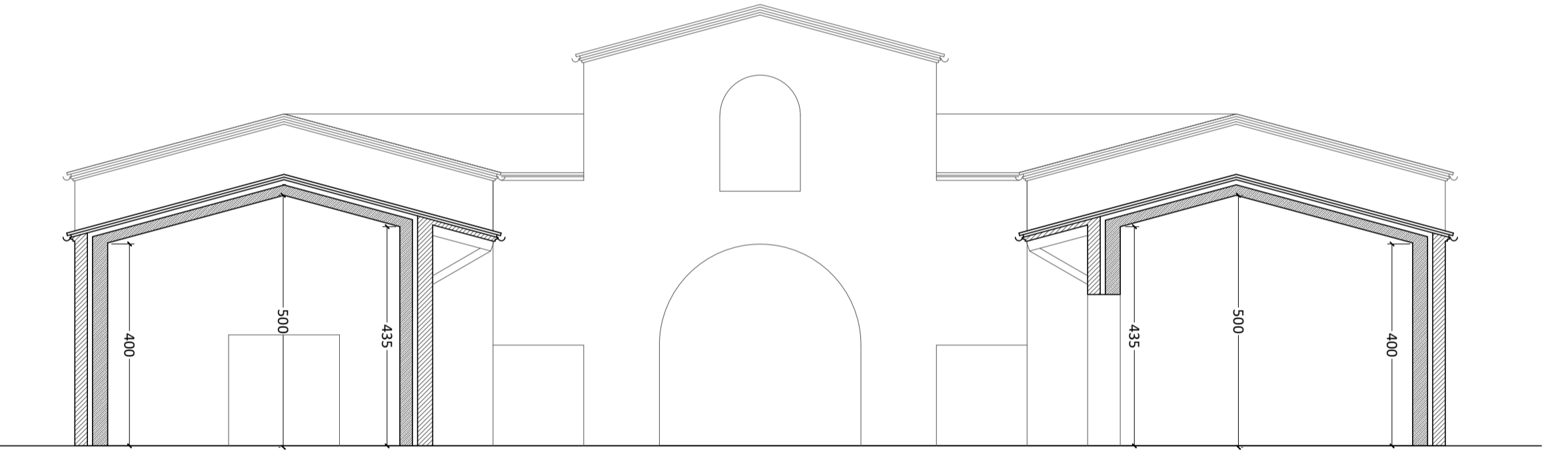
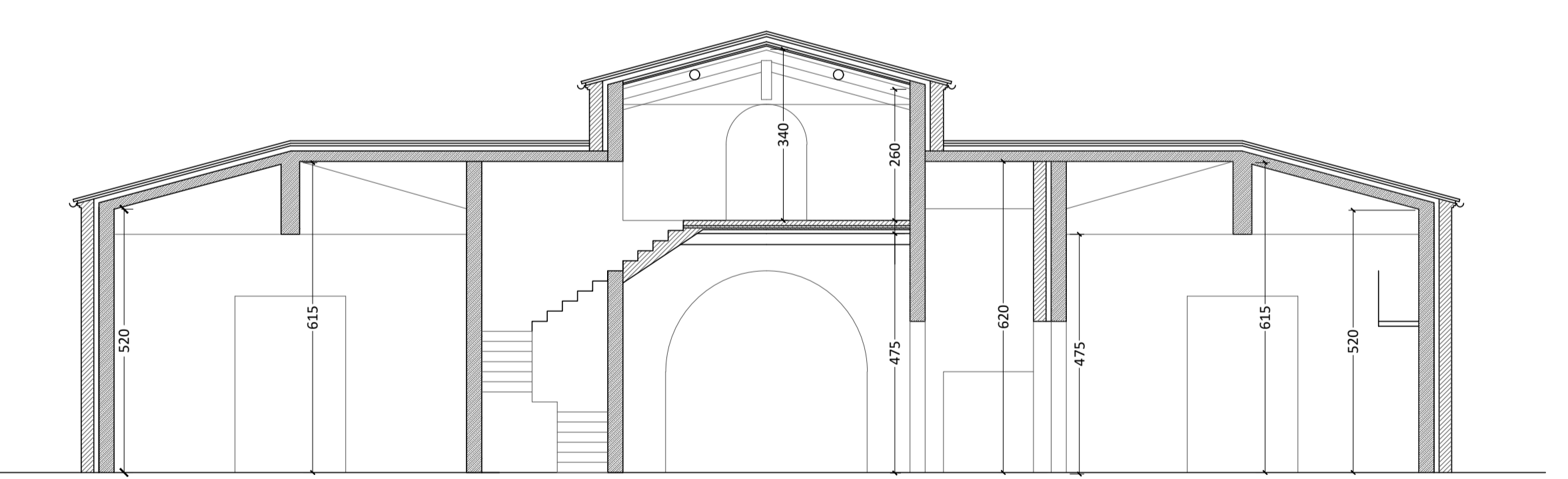


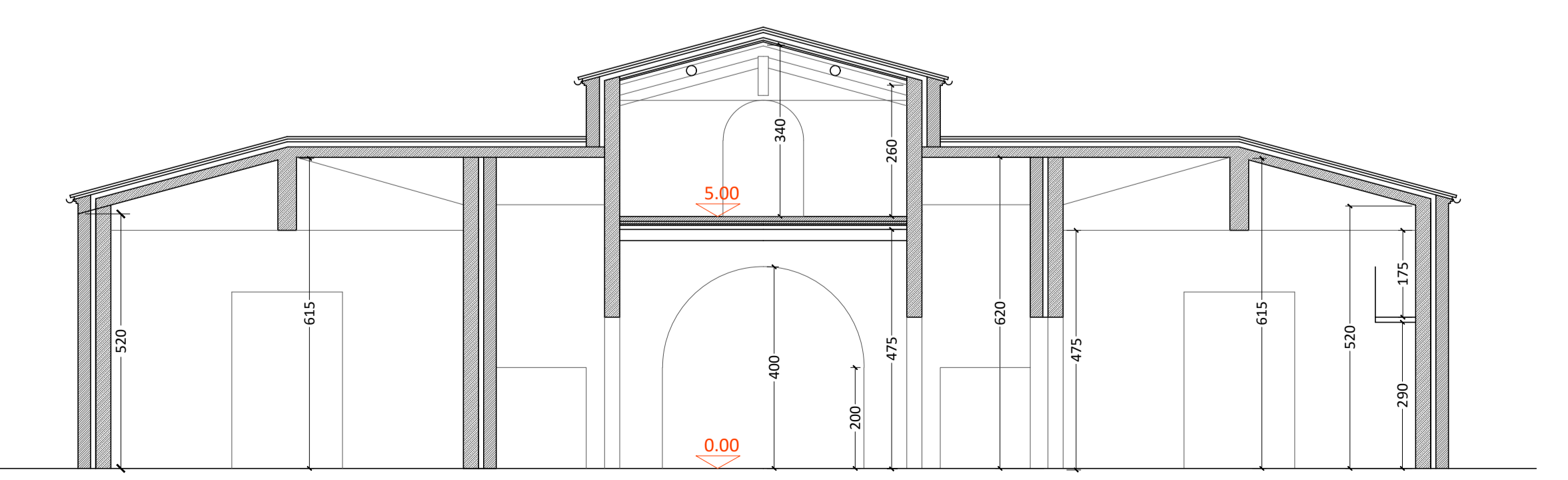
SEZIONE C-C



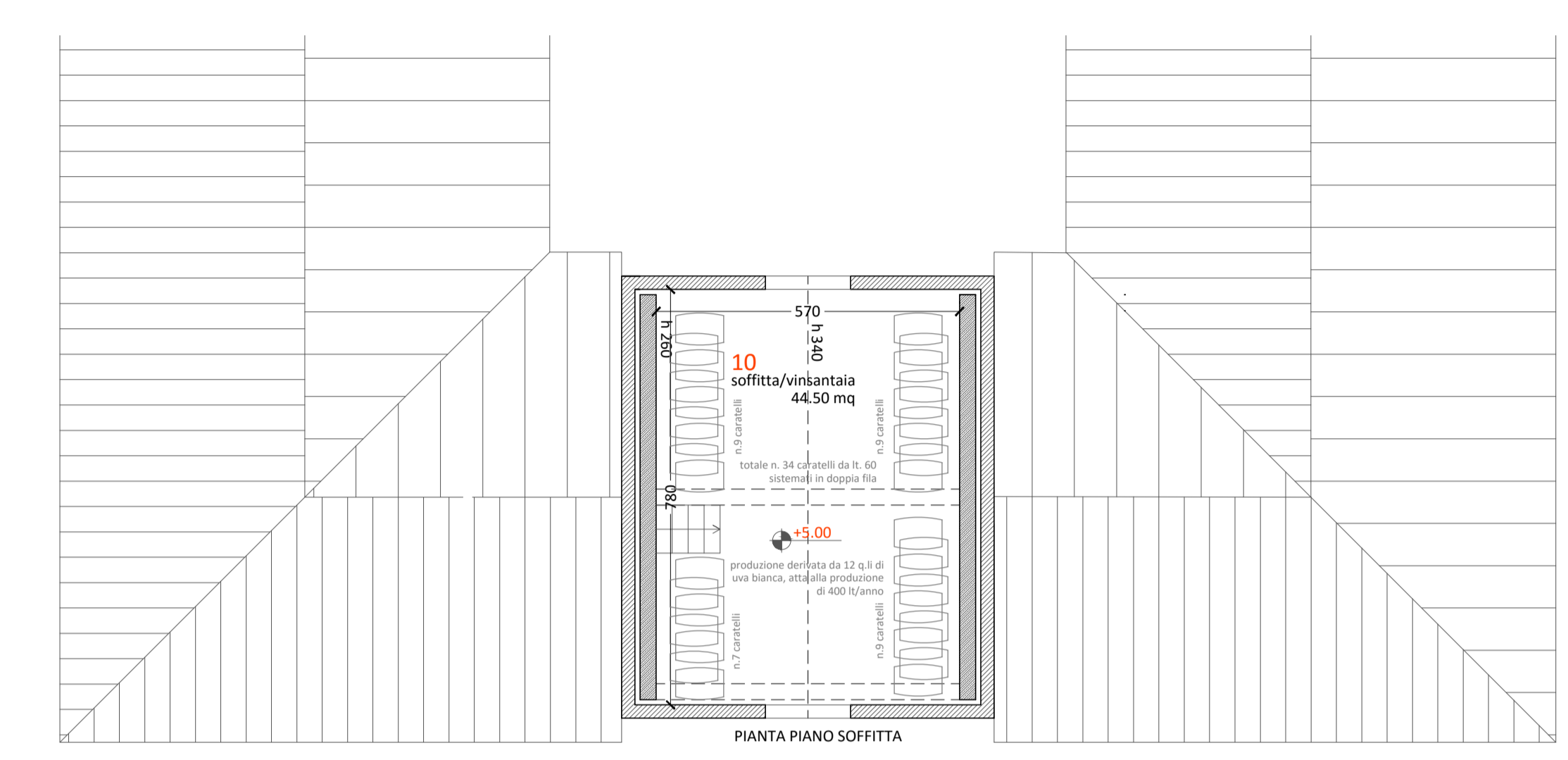
SEZIONE B B



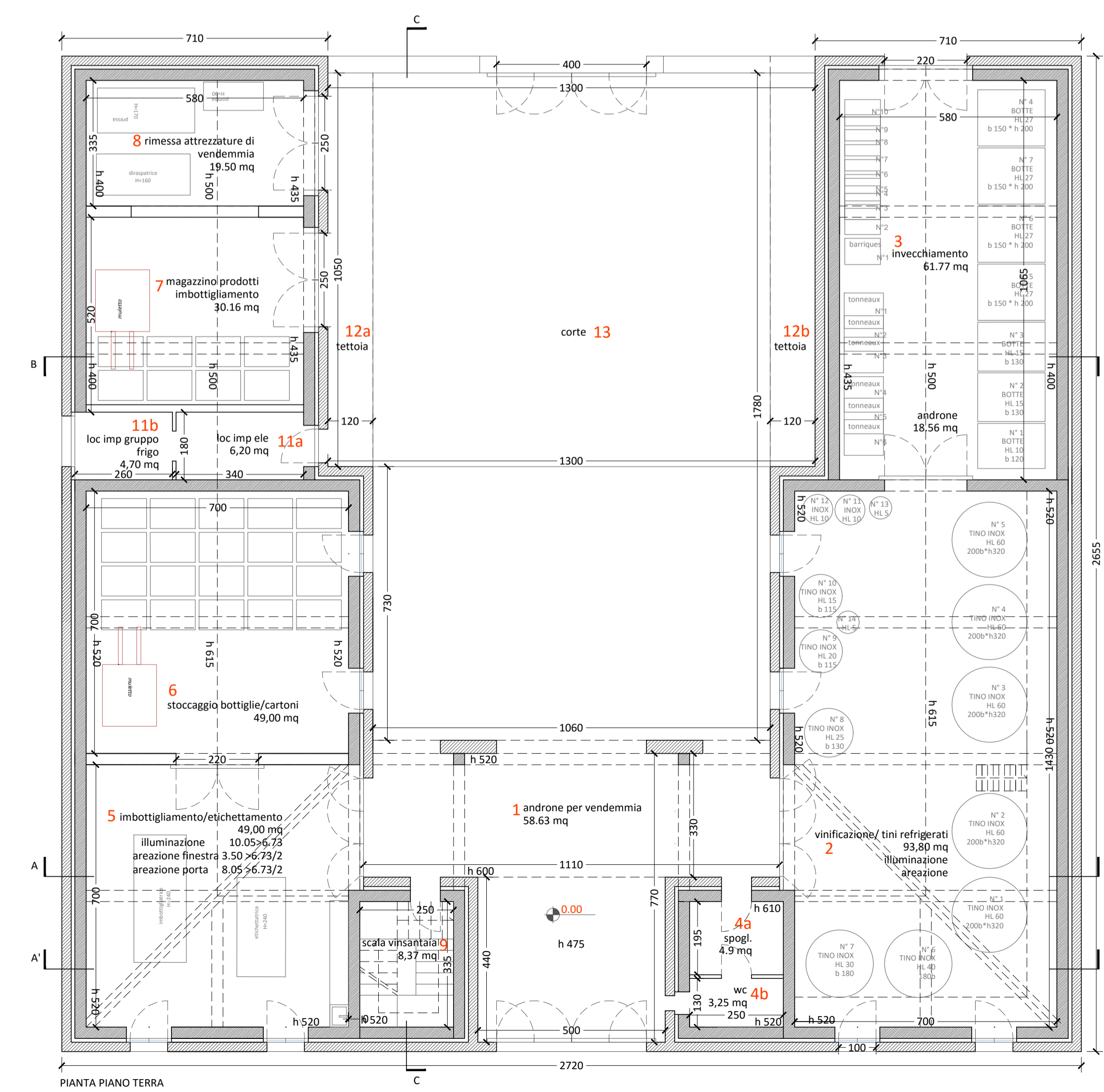
SEZIONE A' A'



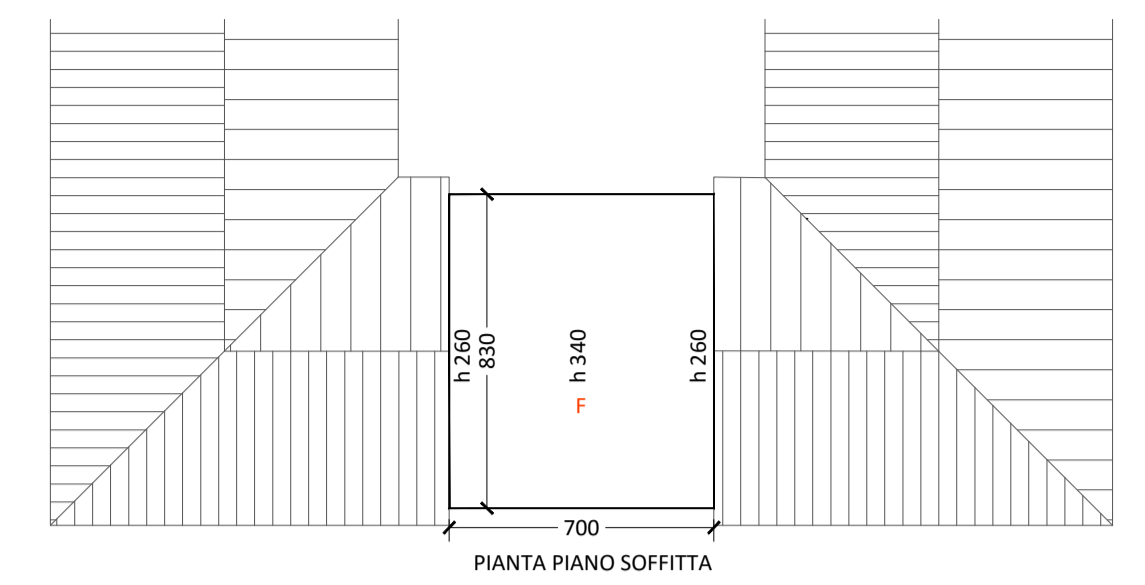
SEZIONE A A



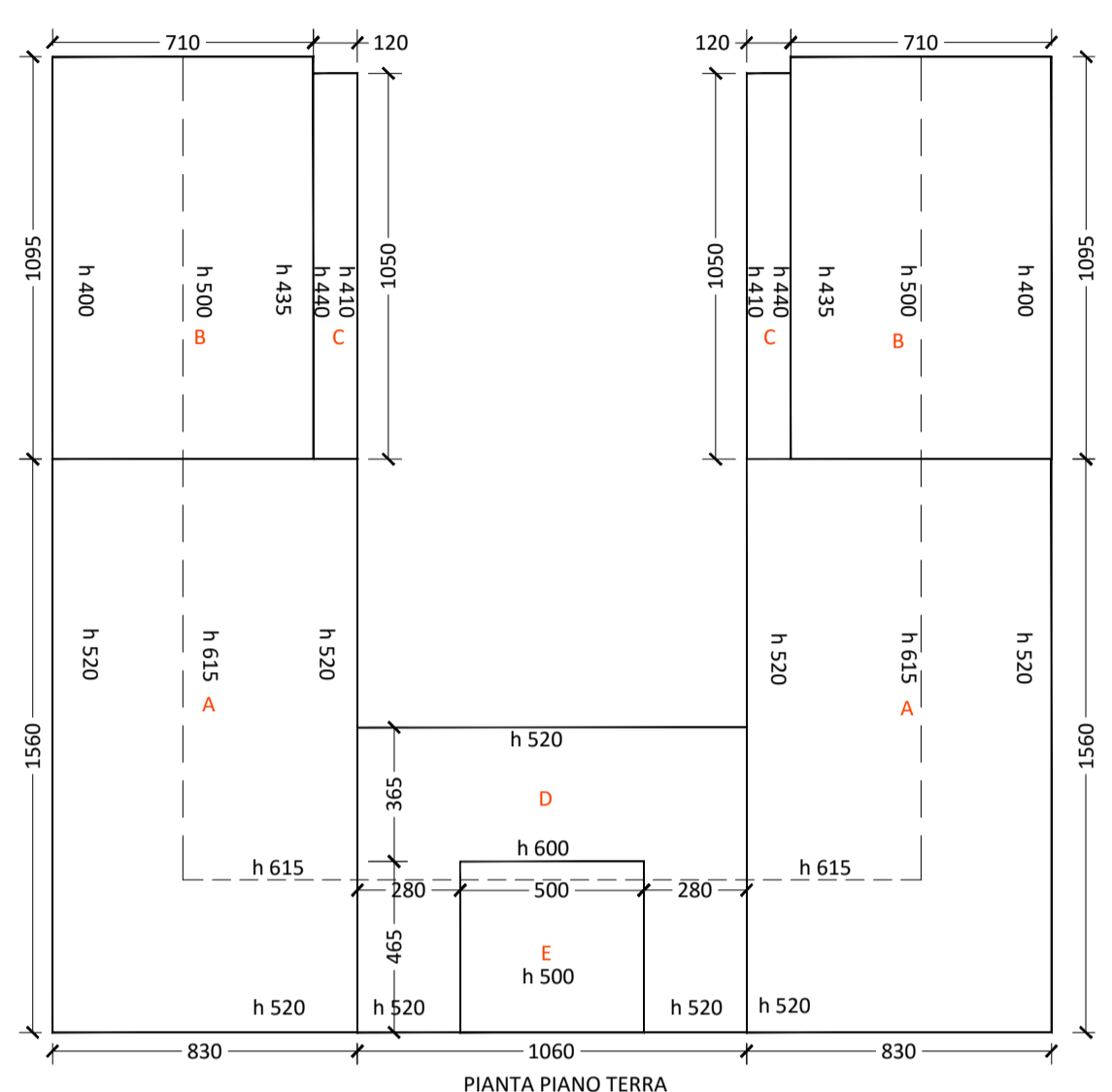
PIANTA PIANO SOFFITTA



PIANTA PIANO TERRA



PIANTA PIANO SOFFITTA

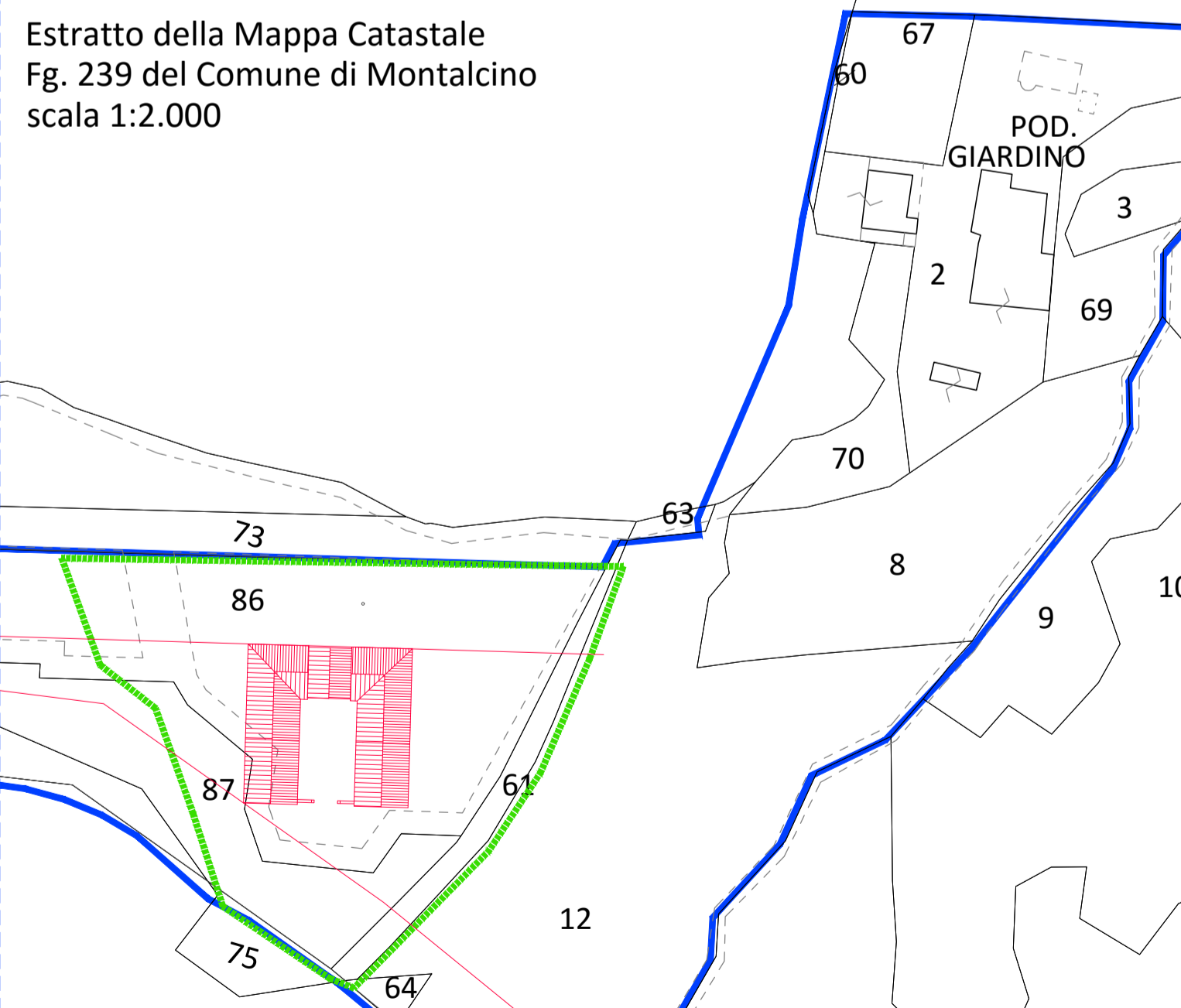


PIANTA PIANO TERRA

COMPUTO DEI VOLUMI

TABELLA DELLE SUPERFICI UTILI		TABELLA DELLE SUPERFICI LORDE		
1	vinificazione	93,80 mq	A 2 x 8,30 x 15,60 = 158,96 mq	
2	invecchiamento	61,77 mq	B 2 x 10,95 x 7,10 = 155,49 mq	
3	loc. tecnici	10,90 mq	C 2 x 10,50 x 1,20 = 25,20 mq	
4	stoccaggio	49,00 mq	D 3,65 x 10,60 = 38,69 mq	
5	magazzino imb. nto	30,16 mq	E 2 x 2,80 x 4,65 = 26,04 mq	
6	magazzino attrezzature	19,50 mq	F 5,00 x 4,65 = 23,25 mq	
7	vinsantiaia	44,50 mq	G 8,30 x 7,00 = 58,10 mq	
Totale		355,88 mq	Totale	585,73 mq

TABELLA DEI VOLUMI		
A	238,96 mq x 5,68 hm = 1.470,89 mc	
B	155,49 mq x 4,68 hm = 727,69 mc	
C	25,20 mq x 4,25 hm = 107,10 mc	
D	64,73 mq x 5,68 hm = 367,66 mc	
E	23,25 mq x 5,00 hm = 116,25 mc	
F	58,10 mq x 3,00 hm = 174,30 mc	
Totale		2.963,89 mc



studio Pignattai Rabagli associati		Montalcino Via Mazzini 46 tel. fax 0577 1740046	
Cliente	Azienda Agricola PODERE GIARDINO di Dragoni Federico	Data	27.06.2016
Lavoro	P.a.p.m.a.a. ai sensi della L.r. 65/2014 Loc. Pod. Giardino S. Angelo in Colle	Agg.	
Oggetto	Volumetria in Programma Sviluppo della Cantina	Scala	1:100
			Tavola N° 06